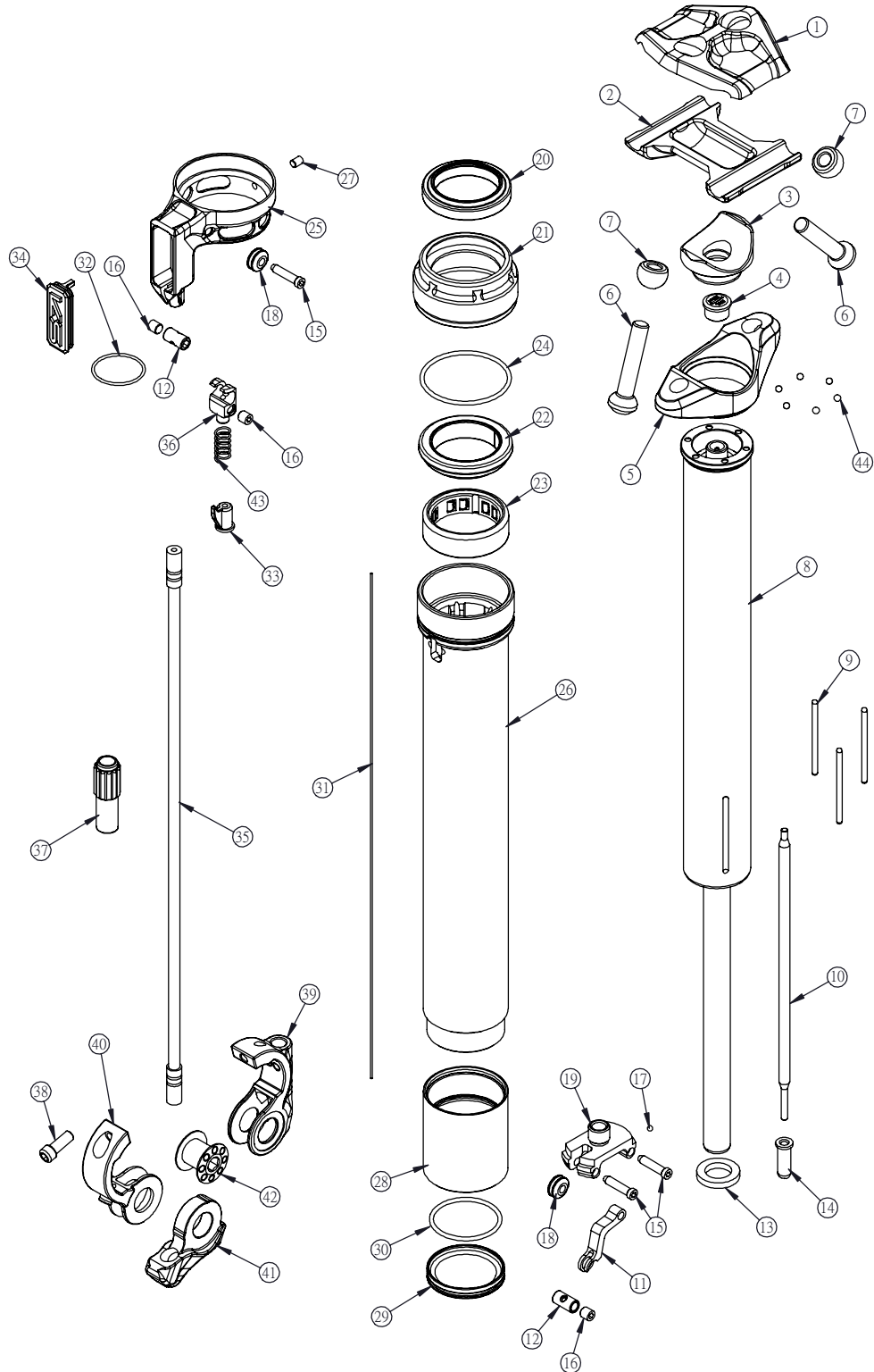




Spare Parts Guide



BOM



Index	Part Number	Description
1	P37 11	Upper Seat Clamp (LEV)
2	P37 12	Lower Seat Clamp (LEV)
3	P01 31	Clamp Cradle
4	P30 14	Clamp Cradle Fastner
5	P01 30	Clamp Anchor
6	P14 34	Clamp Bolt (LEV)
7	P54 05	Clamp Bold Nut (LEV)
8	A3105-100	Oil Pressure Stick
	A3105-125	
	A3105-150	
9	P26 HL	Lower Guide Bushing
10	P26 ML	Pushrod (LEV)
11	P39 18	Actuator Lever(LEV)
12	P57 13	Cable Clamp (LEV)
13	P13 07	Bottom Out Bumper
14	P26 OL	Pushrod Cap (Lev)
15	P14 26	Lever/Actuator Pivot Pin
16	P14 21	M4xP0.7x5L Housing Set Screw
17	P17 03	Ball
18	P47 07	Cable Roller (LEV)
19	P11 15	Actuator Assembly (LEV)
20	P43 06	Wiper Seal
21	P10 15	Seal Collar
22	P32 06+P23 05	Du Bushing Carrier
23	P47 09	Roller Bearing
24	P28 31x1.5	Piston O-ring(31 × 1.5)
25	P57 10	Coupler Housing
26	P40 BLL	Mast Shaft
27	P14 01	M3xP0.5x4L Housing Set Screw
28	P10 16	Mast End Sleeve (LEV)
29	P11 14	Mast End Cap (LEV)
30	P28 24x1.5	Piston O-ring(24 × 1.5)
31	P35 06	Link Cable
32	P28 19x1	Piston O-ring(19× 1)
33	P35 08	Cable Ferrule (LEV)
34	P57 11	Coupler Housing Cap
35	P3501-150-LEV	Cable and Housing
	P3501-170-LEV	
36	P57 12	Coupler
37	P35 09	Cable Collar
38	P14 27	Remote Clamp Bolt
39	P57 07	Upper Remote Clamp Half
40	P57 08	Lower Remote Clamp Half
41	P39 19	Remote Lever
42	P51 01	Remote Clamp Pivot
43	P55 17	Coupler Spring
44	P17 01	Ball

Part Details and Barcode



1



2



3



5



6



Part Details and Barcode



7



8



8



8



9



10



Part Details and Barcode



11



12



13



14



15



16



Part Details and Barcode



17



18



19



20



21



22



Part Details and Barcode



23



F4709 - ROLLER BEARING

24



F2031A1,5 - FESTON O-RING(33*1,5)

25



F5710 - COUPLER HOUSING

26



F4061L - FIRST SHAFT

27



F1401 - H3*0,5*0,6 HOUSING SET SCREW

28



F4010 - FIRST END SLEEVE

Part Details and Barcode



29



30



31



32



33



34



Part Details and Barcode



35



35



36



37



38



39



Part Details and Barcode



40



41



42



43



44

